



Blessed to be a Blessing

May 2021

Worship Services

8:00 a.m. On-line only

*"Gathered around Word and
Sacrament, we live the Good
News of Christ's love
throughout our
Community and the World."*

Bethlehem Staff

Pastor Katie Chullino,
pastor@bethlehem-lutheran.net

Deaconess Ann Maki
Faith Formation Interim Director
faithformation@bethlehem-
lutheran.net

Joy Knoppel, Pastoral Intern
intern@bethlehem-lutheran.net

Nancy Tiff, Office Coordinator
admin@bethlehem-lutheran.net

**Brenda Harris, Director of
Worship and Music**
brenda@bethlehem-lutheran.net

Karen Haag, Bookkeeper
bookkeeper@bethlehem-
lutheran.net

Tiffany Beisner,
Communications Coordinator
communications@bethlehem-
lutheran.net

Aaron Jurkovich, Webmaster
webmaster@bethlehem-
lutheran.net

Cornerstone Preschool

**Andrea Becker, Director of
Cornerstone Preschool**
andrea.j.becker@gmail.com

Ministry Events in May

- ♦ Virtual Worship Service: Sundays, 8:00 a.m.
- ♦ eDevotions: Festive Fridays
- ♦ Manna Bible Study: Mondays, 9:00 a.m.–11:00 a.m. via Zoom
- ♦ Bethlehem Quilters: Thursdays, 9:00 a.m. via Zoom
- ♦ Daily Walk Bible Study, Thursdays, 1:00 p.m. via Zoom
- ♦ Communication Committee Meeting, May 4, 6:00 p.m. via Zoom
- ♦ Virtual First Friday Fellowship, May 7, 6:30 p.m.–7:30 p.m.
- ♦ Naomi Circle Meeting and Bible Study: May 11, 9:15 a.m. via Zoom
- ♦ BLC Council Meeting: May 11, 7:00 p.m. via Zoom
- ♦ Bethlehem Book Club: May 13, 9:00 a.m. via Zoom
- ♦ Confirmation Class: All grades, May 16, 1:00 p.m. via Zoom
- ♦ Virtual Sunday School: see details under Faith Formation

All meetings will be by video conferencing unless otherwise noted; contact the meeting coordinator for the link information. More details of these events and additional information can be found on our website:
www.bethlehem-lutheran.net.

Rev's Revelations

"Are you Christian?" the woman in my office asked.

"Yes, we are a Lutheran church which means we are Christian." I calmly replied.

To be honest, I was a little miffed at this question from this person who had just entered my office seeking my help. Of course, we're Christian, did you see the cross out front and the Jesus picture in the hall?! I'm sure a therapist could help unpack a lot of my feelings in this situation, but that's not what this is about. This is about a congregational identity.

There was a time—in most of our lifetimes, actually—when a person could look at a church sign and know exactly what they'd find inside. A Lutheran sign meant you'd be inside there awaiting a healthy helping of Word and Sacrament and probably a side of social activism or service—Lutherans have always been about helping people in need. No matter what denomination was indicated on a sign, a person knew what a church was and what that church was about.

But, not anymore. The situation has happened more times than I can count—with people seeking financial help, food, shelter, or simply someone to talk to or somewhere to worship—and it has happened in every congregation I have served since seminary. Simply being a church, even being of a particular denomination, does not indicate what defines the people of that church or their mission.

In the Spring of 2020, Bethlehem formed a Strategic Planning Team (SP Team). There were lots of hopes and dreams for this team. But as we began our work, we were guided by the Spirit—and Pastor Dana Peterson—to reflect on who we are at Bethlehem and what we are about—precisely because of situations like the one described above. The members of the SP Team took their years of experience at Bethlehem (and other churches) and crafted statements of belief, values, vision and mission. You've likely seen those in emails or mailings this past year. As a still "new" pastor in this particular congregation, I was inspired by the congregation's roots as well as this team's focus on growth—not just growth in numbers but in personal lives. I see the proposed mission statement already at work in our ministries daily: Through God's abundant love we invite, welcome, and serve as a light in the world.

Throughout this Spring and Summer of 2021, we are entering the next phase of Strategic Planning. SP Team members are meeting with ministry chairs and ministry teams (like Faith Formation) to look at those statements, reflect on them (feedback is helpful!), and form goals to renew their ministries. Reflecting on who we are, what we do, and why we are a community together is especially important as we begin to "come back" from the pandemic and learn how to be church together in-the-same-room again. The proposed mission reflects what Bethlehem has long been called to do—invite, welcome, and serve—as well as what we are called to be—a light in the world.

Please, join me (and your church friends!) in worship this Spring and Summer—whether it's online, outdoors, indoors, or in your cars. During this time Bethlehem preachers—myself, Deaconess Ann, Intern Joy and Seminarian Andrea—will explore not only what it means to be a Lutheran or a Christian, but also what it means to be a light in the world with you!

Peace,

Rev NJC

Worship

May Lectionary Resources

May 2: Fifth Sunday after Easter

This Sunday's image of how the risen Christ shares his life with us is the image of the vine. Christ the vine and we the branches are alive in each other, in the mystery of mutual abiding described in the gospel and the first letter of John. Baptism makes us a part of Christ's living and life-giving self and makes us alive with Christ's life. As the vine brings food to the branches, Christ feeds us at his table. We are sent out to bear fruit for the life of the world.

Edited from Sundays and Seasons

Worship Focus: Vision

- ♦ John 15:1-8
- ♦ Holy Communion

May 9: Sixth Sunday after Easter

This Sunday's image of the life the risen Christ shares with us is the image of friendship. We are called to serve others as Jesus came to serve; but for John's gospel, the image of servanthood is too hierarchical, too distant, to capture the essence of life with Christ. Friendship captures the love, the joy, the deep mutuality of the relationship into which Christ invites us. The Greeks believed that true friends are willing to die for each other. This is the mutual love of Christian community commanded by Christ and enabled by the Spirit.

Edited from Sundays and Seasons

Worship Focus: Mission—invite, welcome serve

- ♦ John 15:9-17
- ♦ Holy Communion

May 16: Seventh Sunday after Easter

The gospel for Easter's seventh Sunday is always taken from the long prayer Jesus prays for his followers in John's gospel on the night before his death, and always includes Jesus' desire that his followers will be one as he and the Father are one. This oneness is not mere doctrinal agreement or institutional unity, but mutual abiding, interpenetrating life, mutual love, and joy. This oneness is the work of the Spirit whom we have received but also await.

Come, Holy Spirit!

Edited from Sundays and Seasons

Worship Focus: Vision - seek, know, follow

- ♦ John 17:6-19
- ♦ Holy Communion

May 23: Pentecost

Fifty days after Easter, we celebrate the outpouring of the Holy Spirit on Pentecost. Crossing all boundaries that would separate us, the Spirit brings the wideness of God's mercy to places we least expect it—to a crowd of strangers of different lands and tongues, to dry bones, to our weak hearts. Jesus promises his disciples that they will be accompanied by the Holy Spirit, and that this Spirit reveals the truth. We celebrate that we too have been visited with this same Spirit. Guided by the truth, we join together in worship, and then disperse to share the fullness of Christ's love with the world.

Edited from Sundays and Seasons

Worship Focus: Pentecost - We believe the Spirit of God empowers us

- ♦ John 15: 26-27; 16:4b-15
- ♦ Holy Communion

May 30: First Sunday after Pentecost - Holy Trinity Sunday

When we say God is the triune God, we are saying something about who God is beyond, before, and after the universe: that there is community within God. Our experience of this is reflected in Paul's words today. When we pray to God as Jesus prayed to his Abba (an everyday, intimate parental address), the Spirit prays within us, creating between us and God the same relationship Jesus has with the one who sent him.

Edited from Sundays and Seasons

Worship Focus: Holy Trinity - We believe Jesus Christ embodies God's love OR We believe the Spirit of God empowers us.

- ♦ John 3:1-17
- ♦ Holy Communion

Covid-19 and Pandemic Updates

Pandemic Advisory Group

The BLC Council has formed a Pandemic Advisory Group (PAG) to help determine what we may or may not need to make in-person activities happen in safe and meaningful ways. This group meets on a regular basis and incorporates local statistics, church guidelines, and other factors when making recommendations and decisions. The most updated information regarding Covid-19 guidelines and resources are posted on the church website and weekly emails. Members of this group are Laura D., Brenda H., Father Teri H., Jenny K., Ann M., and Chuck S. You can email the group at PAG@bethlehem-lutheran.net.

Pandemic Advisory Group Recommendations

Pandemic Advisory Group—Recommendations to Council, April 10, 2021

From a place of love for our neighbor, our congregants and leaders, we continue to assess the current situation and look forward not from a place of fear, but from care for one another.

We confirm the council's recommendation of allowing small outdoor group (10 people) gatherings based on the established guidelines from last fall and available on our website (<https://www.bethlehem-lutheran.net/gather/covid-19-news-and-plans.html>).

With regards to in-person worship, at this time based on current data for our area, we are recommending the current procedures in place—online services and no in-person worship or gatherings in the church building.

We do, however, see a path to holding outdoor worship services, according to county guidelines, once we see how the data trend is moving to decreasing numbers of cases and testing positivity, and increased vaccination rates. We are hopeful that this would be in the May/June time frame.

We will continue to monitor the data and work on indoor worship and gathering guidelines using input from Boulder County, RMS, Church Mutual, and other area congregations.

We recommend doing another congregational poll similar to last year's poll, possibly incorporating vaccination status information.

We recommend a regular update to the congregation through communication channels to keep them informed and allow direct input with the group (including updating the website).

Pandemic Advisory Group—Recommendations to Council, April 24, 2021

At the time of this month's STAR printing, here is the most recent update from the Pandemic Advisory Group (PAG).

The PAG drafted a detailed proposal of guidelines for outdoor worship services. From there, it goes to council for discussion and approval. From there, it turns over to worship leadership, tech team and many other volunteers and staff to see when it is safe to put established guidelines into practice and hopefully have outdoor worship services in person by late May/early June. Updates can be found on the church website and in the weekly emails.

As Christians, gathering to worship the Lord is key to our faith journey. In-person worship offers a community opportunity to experience the Spirit's presence together in a way that has been deeply missed this past year. While we look forward to when we can worship together, we are called also to care for this community of faith, and to care for one another. It is important to know in-person worship for a period of time will be different from traditional BLC worship. In order to mitigate and manage risks during this global pandemic, changes to worship have to be made for the safety of this community; this is not to frustrate or cause fear but for our love for one another. It is important to be honest so when we can hold in person worship, congregants are not disappointed by unmet expectations. Soon and very soon, we look forward to worshipping together in person, and outdoors. Stay tuned!

Covid-19 Information

You can read BLC's current pandemic precautions below or on our website at: <https://tinyurl.com/BLCCovid19>

The Rocky Mountain Synod Council updated recommendations in February: <https://files.constantcontact.com/bbca2826001/47e0999a-d211-49ec-be09-004111ad2cd3.pdf>

eDevotion and Worship Opportunities

Sunday Worship Online

We continue to lead a live stream worship service at 8:00 a.m. on Sundays. You can participate in the latest service here: <https://tinyurl.com/BLCsundayworship> and choose the appropriate date.

eDevotions

Join Bethlehem for each week's eDevotion anytime after noon on Fridays! If you would like to share good news or thank a member of our community, email pastor@bethlehem-lutheran.net before noon on Thursday to get your info in next Friday's video. <https://tinyurl.com/BLCeDevotions>

Faith Formation

Zoom Coffee Hour for May

At 9:15 a.m., every Sunday, there will be a BLC leader on Zoom to chat with you. This is a great time to talk with other members, find out what's happening in the church and community, and support each other during a tough time. Zoom information is in your Weekly Email.



Star Words

On Epiphany Sunday, we began learning about our Star Words for 2021. You should have received a Star Word in your Advent/Christmas gift bag. (Contact Pastor Katie if you didn't get one!) These words are meant to ponder and reflect on throughout the year. A tip from A Sanctified Art (sanctifiedart.org): Look up the definition of your word, even if it is a word you know well. You may even look into the etymology of the word and how its meaning has changed throughout history. If you received a non-English word, do as much research as you can into the meaning of the word in its original culture.

New Adult Forum



ADULT FORUM

MAY: CREATION

ALL ARE WELCOME SERIES

LEAD BY INTERN JOY

Please join us May 16 @ 9:15am as we learn about building zero waste communities from Rosie Briggs, a community manager working with Eco-Cycle in Boulder, CO.

Recent Scam Alert

Note: There have been a number of scams targeting church members. Pastor Katie, Deaconess Ann, and BLC leaders will never ask for money or gift cards via emails or texts.

Faith Formation

Sunday School Ministry Update

What an unusual-distanced Sunday School year. One last resource will be mailed to each Sunday School household in May. There is no Sunday School in the summer, but a Day Camp opportunity is in the works. The Faith Formation team is looking forward to a great in-person Rally Day come fall to celebrate together in August. Thank you for being a part of this community of faith!

BLC Confirmation Ministry

Our last school year confirmation class will be held outside (weather permitting - fingers crossed!) on Sunday, **May 16** at 1:00 p.m. in the pavilion on the BLC grounds. Please bring a beach towel, wear a mask and PLEASE let Pastor Katie or Deaconess Ann know if you plan on attending. If you are uncomfortable with this plan or have further questions, please talk with Deaconess Ann, faithformation@bethlehem-lutheran.net



High School Ministry

Congratulations and blessings to the BLC community High School Seniors! A special celebration for them and their families is in the works. God bless you!

Madi B., Karsen B., MacKenzie D., Rachel K., Haley R., Lisette S., Kiowa S., and Hannah W.

Summer Camp Opportunities

Outdoor ministry can shape one's faith in powerful ways! Both Sky Ranch Lutheran Camp and Rainbow Trail Lutheran Camp will be having onsite, in-person camp week opportunities this summer. You and your family can make the decision that works best for you. Sky Ranch the week of **July 25-30** (or half week for youth completed grades 1-3) and Rainbow Trail has availability that ranges based on age/week. Current information for both camps can be found on their websites. Skyranchcolorado.org and Rainbowtrail.org. Scholarship funds are available. If you want more information, scholarship assistance or to say, Hey, I signed up, please let Deaconess Ann know. faithformation@bethlehem-lutheran.net

Day Camp!

Save the dates: **July 12-16, 2021**. Together in Christ with the First Evangelical Lutheran Church in town, we are planning an in-person day camp (hopefully) on the grounds of Bethlehem Lutheran Church (BLC). We anticipate morning times, pre-registration and other details that will have to wait to be made based on the guidelines/regulations as time gets closer. As more plans are solidified in the coming months, I will keep you posted. Deaconess Ann, faithformation@bethlehem-lutheran.net



Milestones

Milestones happen during pandemics, too. If you are celebrating a milestone in your life, we would like to celebrate or commemorate it with you! Packets are available to be mailed, porch delivered or picked up at church.

These are listed in alphabetical order:

ACT/SAT test	Extra-Curricular Achievement
Arrival of a New Sibling	First Christmas apart
Birthday	First Lost Tooth
College Graduation	High School Graduation
Death of a Loved One	Leaving Home
Death of a Pet	Marriage
Difficult Time	New Grade
Divorce - for adults	New Home
Divorce - for parent of adult children who are divorcing	Retirement
Divorce - for children experiencing the divorce of their parents	Riding a Bike
Driver's License	Wedding Anniversary
Empty Nesting	Welcoming a New Pet

Gather

Notice to all High School Seniors and College Students

The Bethlehem Education Committee is seeking to notify all high school seniors and college students that the application process for a BLC education scholarship for the academic year 2021–2022 will begin **May 1, 2021**. The application deadline is **July 1, 2021**, with scholarships to be awarded **August 1, 2021**.



To access the application, students will need to log into the Bethlehem website with a BLC account to access the members only space. If you do not have an account for the website, you will need to use the Create an Account button at the bottom of the sidebar to enter your username and password, and then you must click the submit button. You will receive notification shortly that you are approved to access the Members Only area. Once you receive this notice, you will be able to login and see the Members' Only area. Proceed to the heading "Resources" and pull down the menu to find the BLC Scholarship Application. Complete and submit.

The Committee looks forward to receiving your application. If you have any questions, contact Pat W. at pwilderco@gmail.com.

Mission

Social Justice Initiative: What does the Lord require of us?

He has told you, O mortal, what is good; and what does the Lord require of you but to do justice, and to love kindness, and to walk humbly with your God? (Micah 6:8)

A new initiative has started at Bethlehem Lutheran Church. Strengthened by our love for all God's creation and recognizing the urgency to act, a social justice initiative committee met and began to plan steps to work for our goal to advance positive change in our church, our community, and our world. We invite all who are interested to participate with this committee—through education as well as action in the myriad issues facing us as Christians in our world today.

Participation: Next Meeting Please join us at our second meeting which is scheduled for Sunday, **May 2**, at 12:00 noon. All are welcome.

SJI Meeting (Zoom)

Join Zoom Meeting

[https://us02web.zoom.us/j/83766695395?](https://us02web.zoom.us/j/83766695395?pwd=emNPTlhTL29DTm9LS0hBK0ZXWW1ZUT09)
[pwd=emNPTlhTL29DTm9LS0hBK0ZXWW1ZUT09](https://us02web.zoom.us/j/83766695395?pwd=emNPTlhTL29DTm9LS0hBK0ZXWW1ZUT09)

Meeting ID: 837 6669 5395

Passcode: 503251

Education: Living Faith: Church in Society

Our first educational opportunity for Bethlehem members to increase awareness of social justice

issues is scheduled: an eight week study from the Rocky Mountain Synod entitled Living Faith: Church in Society. We will meet every Wednesday at 12:30 p.m. beginning **May 28**. You can join this study at any time. Missing the first meeting is not critical for the rest of the series. Topics include ELCA Social Statements; Caring for Creation; Economic Life; Immigration; Healthcare; Race, Ethnicity and Culture; and Faith, Sexism and Justice. Check out the class information at https://www.rmselca.org/living_faith to see what this is all about. If interested in joining the class, please email Margot H at nordatter@gmail.com to be added to the class contact list.

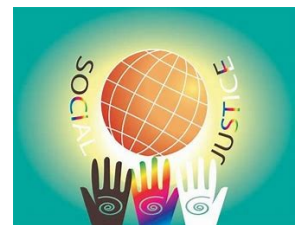
BLC Living Faith: Church in Society

Join Zoom Meeting

[https://us02web.zoom.us/j/87381743510?](https://us02web.zoom.us/j/87381743510?pwd=cW9DcjVpNTQ3V2VUanloTHRDWWWh6QT09)
[pwd=cW9DcjVpNTQ3V2VUanloTHRDWWWh6QT09](https://us02web.zoom.us/j/87381743510?pwd=cW9DcjVpNTQ3V2VUanloTHRDWWWh6QT09)

Meeting ID: 873 8174 3510

Passcode: LF4Society



Connect

Virtual First Friday Fellowship in May

Join us on Friday, **May 7**, from 6:30 p.m.–7:30 p.m. for our virtual First Friday! We will be using Zoom, and the link will be shared in the weekly email. First Friday is a monthly adult fellowship opportunity to get to know other church members in a relaxed setting. No reservations are required; just enjoy an appetizer and a beverage at home while we Zoom and visit with each other!



If you have any questions, please contact Shirley K. (skasper23@yahoo.com).

Bethlehem Book Club

Join us on Thursday, May 13, at 9:00 a.m. for our discussion on [Once I Was You: A Memoir of Love and Hate in a Torn America](#) by Maria Hinojosa. We will meet virtually using our Zoom connections and welcome all who are interested! Details of the meeting will be sent out by email; if you would like to be added to our email list, please contact Mary Jane (mjvoogt2003@gmail.com).



Naomi Circle

Our membership is open to all who are interested in joining us. Our next meeting is on Tuesday, **May 11**, from 9:15 a.m.–11:00 a.m. We will meet virtually using Zoom; the link will be shared beforehand by email. All ladies are invited to come and invite a friend for a wonderful Christian fellowship. Hope to see you there!

Contact Linda H. (holstell@outlook.com) or Sue S. (suesmith512@msn.com) for further information on the above. If you need help in setting up Zoom ahead of time, contact Jenny K. (communications@bethlehem-lutheran.net)

Updating the Directory

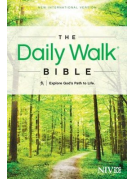
We are working on a new directory so please notify the office of any changes to your contact information! Please let Nancy know of any changes to your address, email, or



phone number(s) so we can update our records accordingly. Nancy can be contacted by email (admin@bethlehem-lutheran.net) or by phone (303-776-3290). Thank you!

Join us in Reading the Bible in a Year

All are welcome to join the Manna Bible Study in reading the bible this year. Zoom discussions on the week's readings are on Thursdays at 1:00 p.m.



<https://us02web.zoom.us/j/86082095721?pwd=MDhnQWxLeEZBczdndlk5NIN1c2J4dz09>

Meeting ID: 860 8209 5721

Passcode: Bible365

If you don't have The Daily Walk Bible NIV by John Hoover, you can read from any bible you'd like. Check the weekly email for the Chapters for the week.

If you'd like to discuss but the Zoom meeting isn't for you, ask Pastor Katie (pastor@bethlehem-lutheran.net) to join the Facebook group discussion for this called Bible 365.

Colleen Beyer has another option for discussing this Bible Study via email. If you would like to be a part of this discussion, contact Collen (cabeyer7@gmail.com)

Quilter's Coffee Zoom

All quilters and non-quilters are welcome to join! Bring a friend! Thursdays, 10:30 a.m.

Zoom Link:

<https://us02web.zoom.us/j/86980731311?pwd=KzRXLOtzMEZtMnB5TnBpZUIWdWpQdz09>



Meeting ID: 869 8073 1311

Computer Passcode: QLT4GOD

If you don't have video capabilities, you can join conversation by phone!

Phone Number: 1 253 215 8782 US

Phone Meeting ID: 871 3685 9719

Phone Passcode: 472501257

Finance for March 2021

General Fund Actual Income:	\$ 117,143	General & Designated Funds Actual Income	\$ 175,264
General Fund Budgeted Income:	\$ 121,738	General & Designated Budgeted Income:	\$ 156,544
Income Surplus/(Deficit):	\$ (4,595)	Income Surplus/(Deficit):	\$ 18,720
General Fund Ministry Expenses:	\$ 120,872	General & Designated Fund Ministry Expenses:	\$ 148,167
Net Surplus/(Deficit):	\$ (3,729)	Net Surplus/(Deficit):	\$ 27,097

Financial Summary Reports Presented to Council are Available

You can download the Financial Reports submitted each month to Council from our Member website under Finances (<https://www.bethlehem-lutheran.net/members-resources/finances.html>). Contact Greg S. (Treasurer@bethlehem-lutheran.net) for more information or with questions or suggestions.

Multiple Giving Options for BLC

We have several options for continuing your donations:

- 1) Mail a check to the BLC office (1000 West 15th Avenue, Longmont, CO, 80501)
- 2) Use our GivePlus online options accessed through our website (visit the church website [Donate tab](https://www.bethlehem-lutheran.net/donate.html) (<https://www.bethlehem-lutheran.net/donate.html>) and follow instructions)
- 3) Use the GivePlus app on your smart phone
- 4) Use the GivePlus Text option from your smartphone (1-844-957-1020)



For more details on all these options, see the website Donate information page (<https://www.bethlehem-lutheran.net/donate.html>). If you are able, please consider keeping your donations on a regular schedule during this time. Contact our financial secretary (financialsec@bethlehem-lutheran.net) for more information, with any questions, or assistance with any of the available options.

Quarterly Donation Statements 2021

The first quarter donation statements for 2021 were mailed out on **April 16** to all who have given plus those who pledged. Please review these statements as soon as possible. If you have not received a statement or if there are any questions, comments, or corrections, please contact our Financial Secretary, Jenny K. (financialsec@bethlehem-lutheran.net, 303-651-6226).

Member Milestones

MAY Anniversaries

- May 3 Jamie and Christopher Adams (35)
- May 8 Sabrina and Bob Lee (45)
- May 9 Carol and Bob Dunkel (35)
- May 12 Sue and Mike Smith (49)
- May 13 Sarah and Jesse Demmel (21)
- May 21 Jane and Roger Lahman (39)
- May 24 Mary and John Mahlendorf (35)
- May 24 Patricia and Dean Wilder (41)
- May 25 Kirk and Debbie Moors (36)
- May 26 Patti and Bob Ritzen (42)
- May 28 Shirley and Howie Wayne (61)



MAY Birthdays

- May 2 Sydney Boaz, Jean Flanagan
- May 3 Laina Carlson, Kaylee Nelson
- May 5 Bob Dunkel, Michelle Nelson, Joel Sutter
- May 6 Carol Bloemker, Pat Wilder, Angela Zhang
- May 7 Beverly Coody, Virginia Postle
- May 8 Bob Ritzen
- May 9 Corrine Herbst
- May 10 Ashlei Kee
- May 14 Carol Dunkel, Amy Zigler
- May 16 Dorothy Sutter
- May 17 Deanna Hebbert, Melissa Lauzon, Pete Schlagel
- May 18 Karen Aumann, Kathy Loberg, Darwin Wissink
- May 19 Kennar Bowman, Theo Ditillo
- May 20 Justin Dirkes, Roger Jurgens
- May 21 Trudi Boaz
- May 23 Elliott Riley
- May 24 Eli Bloemker, Alice Steinke
- May 25 Jeremy Goodman, Audrey Marquardt
- May 27 Jan Stoffer
- May 29 Phil Goode, Barb Blando, Morgan Rawlins
- May 30 Claudia Byrne, Ava James

Healing Prayers for:

Kate A., Gloria W., Alice S., Jan M., Bob D., Carol T., Joe P., Ranelle L., Robert H., George D., Estelle G., Carol D., Darlene B., Jerry and Sharon KC, Bayne G., Betty C., Joyce G., Marilyn V., Bruce B., Candy T., Jeremy G., our homebound members: Mike G., Lydia M., Esther G., Doris C., Peggy P.

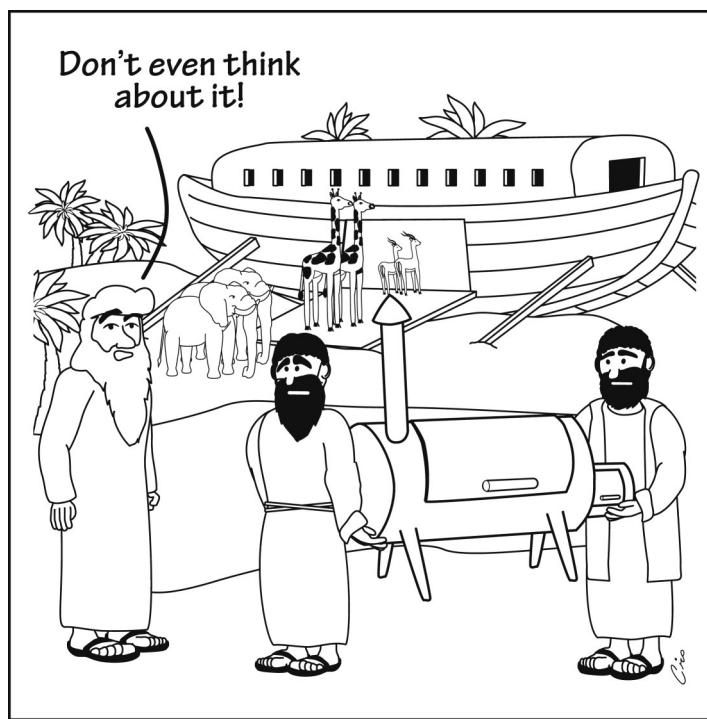


Thank you

Thank you to my Bethlehem family during Francis' illness and passing. It means so much to me.



~Florence M.



Bethlehem Lutheran Church
1000 15th Avenue
Longmont, CO 80501
Return service requested

Keep the BLC Office Up to Date

Please keep the church office up to date with address, email and phone information for your family. Contact Nancy at the church office (303-776-3290, admin@bethlehem-lutheran.net) with any changes in contact information.

Weekly Announcements are also available on the website. Go to www.bethlehem-lutheran.net, login as a Member and then go to [Notes/Weekly Bulletins](#).

Deadline for weekly announcements: The Wednesday before you want the announcement to appear in the bulletin. *Submit all announcements through the Members website/Resources/ [Submit to BLC news form](#) or the BLC news email (news@bethlehem-lutheran.net).*

Deadline for the 2021 May Star:
April 20. Submit all articles through the Members website/Resources/[Submit to BLC news form](#) or the BLC news email (news@bethlehem-lutheran.net). If you have any problems, please contact webmaster@bethlehem-lutheran.net.

