

# The Star

Newsletter of Bethlehem Lutheran Church



*Through God's abundant love we invite, welcome, and serve as a light in the world.*

# April

## Palm Sunday, April 13

- Breakfast fundraiser hosted by the BLC Youth
- Services at 8:00 a.m. and 10:15 a.m.

## Maundy Thursday, April 17

- Service at 7:00 p.m.

## Good Friday, April 18

- Good Friday Silent Walk at 1:00 p.m. (more info on page 4)
- Service at 7:00 p.m.

## Easter Sunday, April 20

- Services at 8:00 a.m. and 10:15 a.m.

## In this Issue:

Rev's Revelations pg. 02

Worship  
Monthly Events pg. 03

Lent, Holy Week,  
Easter pg. 04

Finances  
Property pg. 05

Faith Formation pg. 06

Gather & Connect pg. 07

Service pg. 08

Growing Gardens  
Important News pg. 09

Member Milestones pg. 10

Council Meeting pg. 11



Bethlehem  
Lutheran Church



Evangelical  
Lutheran Church  
in America

It was the morning of the scholarship banquet during my senior year of college. I was asked weeks prior to offer the opening prayer. As I skimmed my notes in the hallway to be sure I gave thanks for the people who paid for a good chunk of education, thanks for the food and those who prepared it, and for God to provide for those who go without, I was thrown off when Pastor Ramona, one of our campus ministers, interrupted telling me, "Katie, you're seated at this table and make sure you have Herb sign your bulletin from chapel." I gave her a skeptical look. "Just do it," she said, "You'll be glad."

I'm not someone to do something just because someone told me to do it. I'm not someone to *ooh* and *ahh* over a person just because someone else thinks they're the bees knees. After leading the prayer, I sat down to a nice dinner with Herb and his daughter, Beth. Many people would probably see him as just an old man with heart disease and a few extra bucks to give to his alma mater. About half-way through dinner Beth said something about her dad's writing and, instantly, Pastor Ramona's directions made sense. This was Herbert Brokering. And you might not know him, but I know you've heard his words.

Herb was a preacher, poet, and hymnist. Every year during opening worship the Wartburg College campus (and many others, too) joins in singing his *Earth and All Stars*. It's the only hymn I know of which sings of *loud boiling test-tubes*. Herb was a creative genius and playfully deep soul. He was one of the rare pastors who spoke to both ELCA and Missouri-Synod Lutherans (the two denominations are often at odds). He led pilgrimages to Germany and peace and justice projects around the world. But, of course, he would never tell you any of that. Instead, he would humbly engage you in conversations which stretched your imagination of God's world. He quickly became one of the few people I may actually idolize.

I asked for Herb's signature that day. Not because it was worth hundreds of dollars. (If you didn't know, hymnists signatures on worship bulletins don't go for much on eBay.) But because I wanted to remember his name, to remember this person who had touched my soul with song before I had ever met him. For years after this encounter, Herb and I exchanged emails. Every time I sent him a note, I'd wonder: *Who am I that someone like him should care?* And, every time, he would respond with well wishes and wisdom. It seemed like everything he said, everything he had done in life, and everything he had left to do was entirely focused on sharing the love of God through Jesus Christ with whomever was within reach.

I tell you this story because I think Herb has a word from God for us today. Another hymn he wrote, *Alleluia! Jesus is Risen!* is one of our hymns for the season of Easter. The words speak volumes about what we believe the risen Christ does in our lives. I challenge you to take a moment each day this week and to ponder the words and what they mean for you. Then, maybe, take a page from Herb's book and reach out yourselves as branches of the vine of Christ.

*Walking the way, Christ in the center  
Telling the story to open our eyes;  
Breaking our bread, giving us glory:  
Jesus our blessing, our constant  
surprise.*

*Jesus is risen and we shall arise.  
Give God the glory! Alleluia!*

*Jesus the vine, we are the branches;  
life in the Spirit the fruit of the tree;  
heaven to earth, Christ to the people,  
gift of the future now flowing to me.*

*Jesus is risen and we shall arise.  
Give God the glory! Alleluia!*

Peace,



## Worship

### April 6, 2025 - 5th Sunday in Lent

Our God makes all things new. In the first reading God promises it. In the gospel Mary anticipates it, anointing Jesus' feet with costly perfume in preparation for the day of his burial. In baptism, God's new person (you!) rises daily from the deadly mire of trespasses and sins.

### April 13, 2025 - Palm/Passion Sunday

Today we follow Christ from triumphal entry to the cross, each waypoint of the journey marked by Jesus' compassion for those who would betray, mock, accuse, or do violence to him. Though persecuted and beaten, Jesus the Son of God is not disgraced; instead, he asks forgiveness for those who put him to death. We have walked the Lenten pathway these forty days, each of us invited through baptism to "let the same mind be in you that was in Christ Jesus." We enter this holy week accompanying Jesus to the cross with both grief and thanksgiving in our hearts, trusting in God's redeeming love.

### April 20, 2025 - Easter Sunday

"The last enemy to be destroyed is death," Paul writes. Today Christ is risen, and we gather together with astonishment and joy. Christ is risen, and we have been set free from the bonds of death. Christ is risen, and we are forgiven. Christ is risen, and with the women at the tomb and Peter, we are amazed. Let us rejoice: Christ is risen indeed! Alleluia!

### Worship Volunteers Needed

There are so many ways to help on Sunday including greeting, ushering, reading... Check out all the ways and please don't hesitate to email us with any questions at [worshipchair@bethlehem-lutheran.net](mailto:worshipchair@bethlehem-lutheran.net) Visit [bethlehem-lutheran.net/worship/](http://bethlehem-lutheran.net/worship/) to sign-up!

### Nursery

We watch children under 3 during the 10:15 a.m. services. We are open on Sunday's 10:10 to 11:30 a.m. If you are an adult and would like to join us, please see Sue Smith for more info.

## April Events

- Worship Service: Sundays, 8:00 a.m. & 10:15 a.m.
- Sunday School: Sundays, 9:15 a.m.
- Manna Bible Study: Mondays, 9:00 a.m.
- Table Talk: Wednesdays, 12:00 p.m.
- BLC Quilters Group: Thursdays, 9:00 a.m.
- Men's Group (Promise Keepers): Saturdays, 8:00 a.m.
- Lenten Soup Supper: April 2, 6:00 p.m.
- Lenten Prayer: April 2, 7:00 p.m.
- First Friday: April 4, 6:00 p.m.
- Men's Group (LMM): April 5, 9:00 a.m.
- Traditions Sunday: April 6, 11:45 a.m.
- Brewsday: April 8, 8:00 a.m.
- Naomi Circle: April 8, 9:00 a.m.
- Council Meeting: April 8, 7:00 p.m.
- BLC/LOC Meeting: April 9, 10:30 a.m.
- Lenten Soup Supper: April 9, 6:00 p.m.
- Lenten Prayer: April 9, 7:00 p.m.
- Book Club: April 10, 9:00 a.m.
- 11th Hour Project: April 11, 11:00 a.m.
- Property Work Day: April 12, 8:00 a.m.
- Palm Sunday: April 13
- Breakfast Fundraiser: April 13, 8:00 a.m.
- Music Ambassadors: April 13, 11:30 a.m.
- Prayer Shawl: April 15, 10:00 a.m.
- Evangelism Meeting: April 15, 6:00 p.m.
- Holy Thursday Service: April 17, 7:00 p.m.
- LOC Stations: April 18, 1:00 p.m.
- Good Friday Service: April 18, 7:00 p.m.
- Easter Eggstravaganza: April 19, 10:00 a.m.
- Easter: April 20
- Office Closed: April 21
- Brewsday: April 22, 8:00 a.m.
- Confirmation: April 27, 11:45 a.m.
- High School Youth Group: April 27, 4:00 p.m.
- Habitat Build Day: April 26



# Lent - Holy Week - Easter

## **Midweek Lenten Soup Supper & Prayer**

Soup Supper is at 6:00 p.m. followed by Evening Prayer at 7:00 p.m. on Wednesdays during Lent. Bethlehem Lutheran and Light of Christ will join together for the season of Lent and Holy Week.

The neighborhood groups take turns providing the soups, relishes, and desserts. The Evangelism Committee provides the bread. The last two soup supper assignments are:

- April 2: Purple and Light of Christ
- April 9: Chili Cook Off – Anyone who wants to make their best pot of chili

Also, please bring your own soup bowl, utensils, cups, etc.

## **Holy Week & Easter**

### **Palm Sunday, April 13**

- Breakfast fundraiser hosted by the BLC Youth
- Services at 8:00 a.m. and 10:15 a.m.

### **Maundy Thursday, April 17**

- Service at 7:00 p.m.

### **Good Friday, April 18**

- Good Friday Silent Walk at 1:00 p.m.
  - Light of Christ community invites you to participate in a non-traditional Good Friday Walk along the St. Vrain Greenway in Longmont on Friday, April 18, 2025 at 1:00 p.m. The Walk will tell the familiar story of the passion of Jesus. At the same time, the Walk will tell a second story of climate change and will specifically focus on the need to care for our water as a precious resource. The Walk will stop at six places along the Greenway to tell parts of each story and will include a prayer of response at each stop.
  - The Good Friday Walk starts at a location on the Greenway at Boston Avenue and Pratt Parkway, across from the Budget Hardware parking lot. Street parking is available. The route is about one mile in length and takes about an hour to complete. People of all faiths or no faiths are invited to join the Walk.
  - For more information, please call the LOC Church Office: 303-772-3785.
- Service at 7:00 p.m.

### **Easter Eggstravaganza, April 19**

- Family friendly community event with the Easter story, egg hunt, and snacks! Starts at 10:00 a.m.

### **Easter Sunday, April 20**

- Services at 8:00 a.m. and 10:15 a.m.

***The church office will be closed on Monday, April 21***



## Finances



### Month of February

Income: \$ 50,378.76  
Expenses: \$ 34,050.29  
Net: \$ 16,328.47

### YTD to Date

Income: \$ 74,190.49  
Expenses: \$ 69,986.33  
Net: \$ 4,204.16

**Financial Summary Reports Presented to Council are Available:** Contact Greg S. (treasurer@bethlehem-lutheran.net) for more information or with questions or suggestions. Printed copies of all the reports are available for review in the Fireside Room library.

## Multiple Giving Options for BLC

We have several options for making donations:

- To make an online web donation (one time or recurring), go to the Donate web page and click on the Online Giving icon to access our secure giving page and then follow the instructions. Detailed instructions are also available on the website.
- For recurring donations, another option is to download the BLC Vanco Enrollment form or get a copy from the BLC Office, complete and sign, and return with a voided check to the BLC office with Attention: Financial Secretary. The financial secretary will set up an account for you.
- Mail or drop off a check or cash to the BLC office (Attention: Financial Secretary, 1000 West 15th Avenue, Longmont, CO, 80501).

Online giving lets you go to our website at any time 24/7 to set up an automatic donation plan, change your donation plan, make a one-time donation, or view your online donation history.

If you have any questions about either our giving or pledging options, please contact our financial secretary (financialsec@bethlehem-lutheran.net, 303-651-6226).

## Property

### Church Work Day!

Join us on Saturday, April 12 to help with several projects around the church. We'll begin at 8:00 a.m. Some projects include: outdoor sweeping, clean the stained glass, clean the office area carpets, clean and paint the office front entrance...



### Solar Project Update

The engineers are drawing plans and the installers have sourced all the supplies. Once the engineer drawings are finished we will reach the permit review process before installation. According to the Dutch Creek Electric, all the federal tax incentives are still in place.

## Faith Formation – Youth

**From the Desk of the Faith Formation Director, Gary:** Our Word/Theme for the year is “Serve” and it represents our mission statement of who we are as a congregation.

### Children’s Sunday School

will be on April 6, 13, and 27 (not meeting on Easter Sunday). We will start at 9:15 a.m. each week in the south Sunday School room.

### Confirmation

will not meet in April. We are learning about World Religions this year and we will dive into other faith communities and learn what they are about.

### Family/Traditions Sunday

will meet on April 6 at 11:45 a.m. to celebrate Earth Day! Lunch will be a baked potato bar, salads and vegetables and we’ll plant flowers to take home for our activity. Please bring your favorite salad or veggie dish to share!



### High School Youth Group

will meet on April 27 from 4:00-6:00 p.m. We will meet for fellowship, faith conversations and about our 2025 July summer mission trip. We will have snacks, games and have a great time in discussions. ALL high school youth are invited.

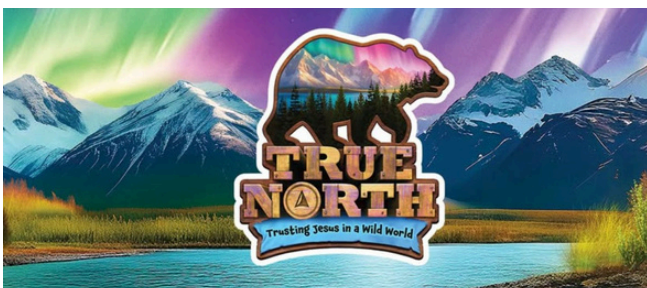
### The High School Summer Mission Trip

will take place in Elkhorn, Nebraska in July. Our youth will be serving and representing BLC while helping rebuild the community after the 2024 tornados.

***Support our high schoolers on April 13 at their Palm Sunday Breakfast Fundraiser!***

### Easter Extravaganza

will be on April 19 from 10:00 a.m. to noon. We’ll read the Easter story followed by an Easter egg hunt. There will be hotdogs, chips, and water. We need youth and adult volunteers to stuff eggs on Good Friday, April 18 from 5:00 to 7:00 p.m. in the youth room –pizza will be served to everyone who helps stuff eggs.



### Vacation Bible School 2025

June 23-27, from 9:00 a.m. to noon

Registration opens on May 1!

For more info visit [bethlehem-lutheran.net/vbs](http://bethlehem-lutheran.net/vbs) or contact Gary K.

## Gather & Connect

### First Friday

Join us **April 4** at 6:00 p.m. at Carl and Gail Schurman's home. Please bring an appetizer and beverage to share. All adults are welcome. For questions call Shirley K.



### Men's Group (LMM)

Men's Group (LMM) will meet on Saturday, **April 5** at 9:00 a.m. We invite all men to participate in this ministry. We will have breakfast followed by fellowship time with a short devotion. Please let Gary know if you are interested so that we have enough food for breakfast.

### Naomi Circle

Join us in the Youth Room and on Zoom on **Tuesday, April 8**, from 9:15-11:00 a.m. Our membership is open to all who are interested in joining us. Please contact Linda H. or Sue S. for further information.

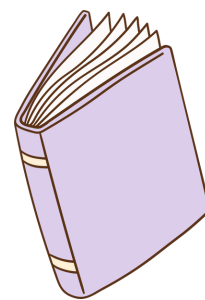


### Brewsday Mornings

We meet at 8:00 a.m. on the 2nd Tuesdays at BLC and 4th Tuesdays at a local establishment. Join us at BLC on **April 8** and at a TBD location on **April 22**.

### Bethlehem Book Club

We will meet **April 10** at 9:00 a.m. on Zoom to discuss *Go As A River* (f) by Shelley Read. This "coming of age" story takes place in the Colorado mountains, with beautiful descriptions and well-developed characters. Contact Mary Jane at [mjvoogt2003@yahoo.com](mailto:mjvoogt2003@yahoo.com) to be put on the list to receive Zoom links and updates.



### Table Talk

Wednesdays at 12:00 p.m. in the Fireside Room. All are welcome--you don't need to attend every week to be part of it. Email [pastor@bethlehem-lutheran.net](mailto:pastor@bethlehem-lutheran.net) for more information.

### Manna Bible Study

We meet each **Monday morning** at 9:00 a.m. for discussion and would love to have you join us. Please contact Phyllis W. ([pkwright1360@gmail.com](mailto:pkwright1360@gmail.com)) if you have any questions.

### Quilting Group

We meet on **Thursday mornings** at 9:00 a.m. and would love to see you there! You don't need any experience. Join us for an enjoyable morning and perhaps to learn something new!

### Men's Group (LMM)

Saturday, April 5, 9:00 a.m.

### First Friday

Friday, April 4, 6:00 p.m.

### Ambassadors at the Atria

Sunday, April 13, 11:30 a.m.

### Naomi Circle

Tuesday, April 8, 9:15 a.m.

### Book Club

Thursday, April 10, 9:00 a.m.

### Prayer Shawl

Tuesday, April 15, 10:00 a.m.

### Manna Bible Study

Every Monday, 9:00 a.m.

### Table Talk

Wednesdays, 12:00 p.m.

### Quilting Group

Every Thursday, 9:00 a.m.



## Service

### Music Ambassadors

We invite everyone to join us – if you can or can't sing, young or old. The residents at the Atria appreciate and enjoy our monthly visits. We'll sing on **Sunday, April 13 at 11:30 a.m.**

### Habitat Build Day

Join us April 26 as we continue working at the Sugar Mill Development. Please sign up on the board in the Narthex. See Bob Cotton for more info.

### Palm Sunday Breakfast Fundraiser!

Support the high school youth on **April 13** as they raise funds for their summer mission trip. We'll serve from 8:00 to 11:00 a.m. free will donation.



### Cub Scout Shoe Drive

Help make a difference in the lives of families in need by donating your gently used shoes! The Wolves Den of Cub Scout Pack 65 is hosting a **Used Shoe Drive at the church from April 6 to April 20**. All donated shoes will be sent to The OUR Center in Longmont, where they will be distributed to families who can truly use them and worn athletic shoes will be sent off for recycling. This is a wonderful opportunity to clear out your closets while supporting a great cause! A donation bin will be available at the church—let's come together as a community and show our generosity. Thank you for your support!



*Ladies Afternoon Tea*

**Saturday, May 3, 2025**  
**2:00-4:00 PM**  
*Doors Open at 1:30 PM*  
Bethlehem Lutheran Church

Purchase tickets March 30–April 27  
Tickets \$10.00

Proceeds to go to Rise Against Suicide, a non-profit suicidal prevention for teens.

### Volunteers Needed for Scout Project

Scout Jonathan Welch is building a new fence around the farm that Growing Gardens runs at BLC for his Eagle Scout project. He is looking for volunteers to help on April 5, 6, 12, and possibly the 13. Each day we will start at 9:00 a.m. and end at about 3:00 p.m. If you would like to help, please sign up on Sign-up Genius by using the QR code or the link. THANKS!  
<https://www.signupgenius.com/go/10C084EAF-A622ABFCC70-55648500-jonathan>



### Spring Opportunities

1. Every Friday morning, Growing Gardens hosts an open **volunteer day** for community to join us on the farm. If you are interested in joining our dedicated volunteer crew, or just stopping by to learn more about our work, please email the farm manager at [tim@growinggardens.org](mailto:tim@growinggardens.org).
2. This year, we will be hosting our **Cultiva Youth Program** on the farm at Bethlehem Lutheran Church on Pratt street! This leadership and farming youth program hires and pays youth ages 14-18 to work part time on our farm during summer break, and to staff our weekly farm stand on Wednesday evenings at the YMCA July - October. [Learn more on our webpage!](#) and please share the attached flyer with anyone who might be interested.
3. Growing Gardens offers the following two programs to promote food accessibility for residents who earn below the median income level for Boulder County. [Here is our registration link for both programs:](#)
  - a. Our Work Trade program invites community members to come volunteer on our farm for two hours each week, and they are sent home with a generous supply of fresh vegetables from the farm. Shifts are Wednesday mornings, or Wednesday evenings.
  - b. Seed & Seedling donations for home gardeners. We offer one day in April, and one day in May for home gardeners to come and pick up free plants and seeds for their own home gardens.
4. General questions and inquiries can be directed to the farm manager at [tim@growinggardens.org](mailto:tim@growinggardens.org).

### 125th Anniversary Planning

Bethlehem Lutheran will have our 125th Anniversary Celebration in 2026. Plans for preparation need to begin. We need to start with a core committee of long time members to any recent new members to discuss ideas for our celebration. Anyone that would like to help in anyway contact Shirley K. or Paul P.



### Newsletter Changes

#### \*STARTING NEXT MONTH\*

To better use staff and volunteer resources, we will transition from a monthly newsletter to a quarterly newsletter beginning in May 2025. The Star will be published in May, August, November, and February.

***This means that ALL items for May, June and July are due before April 20!***

### Home Communion and Visits

Our Visitation Ministry Team loves to visit members in the comforts of their homes. If you would like us to bring you communion at home or just sit to chat, please call the office!



### New Member Welcome

In May we will welcome new members! Our new member orientation will be April 27 at 9:15 a.m. and our welcome service will be on May 4.

*Welcome.*

**New Members**

## Member Milestones

### Birthdays

Apr 1 Patti Ritzen  
Apr 1 Cindy Tayler  
Apr 4 Nolan Bloemker  
Apr 4 Joseph Varas  
Apr 5 Carolyn Creamer  
Apr 6 Alexander Haney  
Apr 6 Landon Luna  
Apr 7 Dan Kube  
Apr 8 Kim Herbst  
Apr 8 Bill Dickhans  
Apr 10 Julie Leake  
Apr 11 Laurie Gardiner  
Apr 12 Teresa Harris  
Apr 12 Duane Penny  
Apr 13 Bud Varas  
Apr 15 Ken Forsberg  
Apr 15 Ray Leake  
Apr 15 Jamie Turner  
Apr 18 Jaime Updegraff  
Apr 19 Ada Maki  
Apr 20 Ken Wright  
Apr 21 Teri Tornow  
Apr 23 Irene Marconnet  
Apr 25 Patsy Bowman  
Apr 26 Joel Lahman  
Apr 27 Owen Kunselman  
Apr 27 Lawrence Woodley  
Apr 28 Pr. Katie Emery  
Apr 29 Amanda Rumsey  
Apr 30 Wanda Schnabel

### Anniversaries

Apr 5 Dean & Sandy Mickelson (28)  
Apr 7 Jean & Gary Flanagan (46)  
Apr 7 Jeff & Kristal Hopp (34)  
Apr 19 Stacie & Nick Spendlow (11)  
Apr 20 Neal & Jan Stoffer (62)  
Apr 20 Perrie & Bill Sanders (23)  
Apr 22 Glenn & Eva Summers (47)  
Apr 24 Mary & Rob Boyer (32)  
Apr 26 Troy & Barb Payne (40)  
Apr 28 Tyrel & Jamie Turner (18)



## Keep those in your prayers

Members: Janice H., Bob D., Ray L., Phyllis W., Steve W., Ava V., Sandy F., Matt J., Ilene R., Doris H., Gerry C., Patty F., Lydia M., Irene M., Doris C., Jamie A., Florence M., Coqui S., Paul P., Darlene B., Kristal H., Jeremy G., friends and relatives of our community: Don C., Linda M., Ilene M., Scarlett K., Michael S., Virginia, Yvonne A., Joann B., Brendan P., Katie P., Shawn M., Staci S., Lydia M.

## Upcoming Newsletter

ALL items for May, June and July are due by **April 20!** Please submit them to [news@bethlehem-lutheran.net](mailto:news@bethlehem-lutheran.net) Thanks!

## Weather Closure

The office follows the St. Vrain Valley School District weather closure schedule. If schools are closed, the church office will also be closed.

## Local Resources

If you need assistance during this time, there are several resources available:

- **HOPE Longmont**, located at: 804 Lincoln St. Longmont, CO 8050, (720) 494-4673
- **THE OUR CENTER**, located at: 220 Collyer St. Longmont, CO 80501, (303) 772-5529
- **THE ROUND PANTRY**, located at: Westview Presbyterian Church 1500 Hover St. Longmont, CO 80501, (303) 776-3242





## Council Meeting Minutes – FINAL March 11, 2025

Respectfully submitted by Sandy Mickelson, Secretary

**CALL TO ORDER:** Brian Carlson called the meeting to order at 7:11 pm.

**ATTENDING:** Pr. Katie Chullino, Brian Carlson, Mark Holste, Greg Schumann, Sabrina Lee, Paul Puebla, Cindy Thompson, Jaime Updegraff, Glenn Summers, and Cathy Goodman. Sandy Mickelson did not attend.

### **DEVOTIONS AND PRAYER:**

- Pastor Katie led the devotions reviewing the history of the saint, Gregory the Great.
- Council went around the room and stated everyone's highs and lows of the week.

**MINUTES OF PREVIOUS MEETING:** approved via email and posted.

### **FINANCIAL REPORT:**

- General Fund giving was above budget by \$16,394.76 in the month of February. General Fund expenses were above budget by \$270.29. The General Fund is what runs the church. This month's giving was approximately \$15,583.26 above last February's giving.
- February giving greatly helped catch up after lower than expected giving in January.
- Greg shared that insurance increased \$4,500 for the year.

**REPORT HIGHLIGHTS:** See each ministry's monthly report for details.

#### **• Pastor/Staff (P. Katie):**

- See Pastor's report.
- Highlights:
  - It is Lent.
    - Wednesday nights – we have a few people coming in to talk to the Congregation.
  - Pr. Katie shared Staff thank yous and updates.

#### **• Worship: (Sabrina)**

- Attendance was up a little in February over January.
- Ushers/greeters are needed for 1<sup>st</sup> service now as well as 2<sup>nd</sup> service. Let Sabrina know of anyone that might be interested.
- Spring palms and bulbs will be delivered the Thursday before Palm Sunday and bulb sales will begin soon.

#### **• Service – formerly Missions (Cathy):**

- 3/2 held Advocacy Forum - 10 people interested and it went well.
- Red cards are up on the bulletin board.

## Council Meeting

- Bob Cotton has 8 people for Teepee Raisers Mission Trip.
- 7 people went to Martin Luther King build day.
- Bob Lee is organizing the Our Center Lunches this year.
- Booksale fundraiser made approx. \$1,200.
- We want to be sensitive to all political affiliations.
- Next Nicaragua trip is February 2026. A maximum of 7 people can go.

### ● Faith Formation (Jaime):

- Feb/Mar Highlights:
  - Lutheran Men in Mission is meeting 1<sup>st</sup> Saturday of every month.
  - Confirmation is studying world religions with different speakers monthly.
  - High School Youth had a well-attended Pancake Supper. They served 74 plates and netted a little over \$700.
  - Have all the mentor volunteers needed.
- We are in need of candy donations for the Easter Extravaganza! We also need help stuffing eggs on Friday, 4/18 from 5-7 before the Good Friday service starts at 7.
- Palm Sunday pancake breakfast and Easter Extravaganza are the next events/fundraisers coming up.

### ● Property (Glenn):

- Kitchen equipment quote was sent to Council in separate email.
- Solar project update: Glenn is disappointed we have not yet received solar drawings. We are not as far along as Glenn had hoped. We received funding for the Solar Project loan.
- Glenn is not pleased with our fire system and is meeting with the company to discuss.
  - A new Account Contact sheet will be set up and updated.
- Rocky Mountain Wiring – will do a free LED Audit. Glenn is meeting with them to see what it would cost to convert everything from iridescent to LED. There are a lot of rebate programs available for this.
  - PACE (Partners for a Clean Environment) granted us \$20K for our Kitchen Project and could assist with a Lighting Project as well.

### ● Stewardship (Cindy T.):

- Support Needed: A churchwide fundraiser for Bethlehem Lutheran. See New Business and Resolution Sections for details.
- Cindy brainstormed Stewardship ideas with Pastor Katie.
- Pr. Katie and Cindy recommended a “Great Thanksgiving” time once a month between passing the peace and communion. Everyone could write down their gratitude’s at any time, put them in the Gratitude Basket, and someone could read them once a month or they could be put-up on the Big Screen monthly. Everyone agreed this was a great idea that could be started at any time.
- 35 Solar Donor thank yous will go out this week.

### ● CARE - formerly Evangelism (Paul):

- Soup suppers are coming up for Lent. Paul asked Council members to help advertise the chili cook-off on Wednesday, April 9th. All members are invited to bring chili.



## UNFINISHED BUSINESS:

- Immigration Stance Policy:
  - Katie reviewed the highlights of the letter from Samson Law Firm regarding our Immigration Stance - see letter from Rick Samson.
  - Pr. Katie's suggestion is to look at the letter, become familiar with it, and Council will discuss what to implement. Brian will notify Council and ask via email if Council is in favor of the recommendations.

## NEW BUSINESS:

- Kitchen equipment quote and update – Glenn
  - See quote Glenn received and sent to Council.
    - Price of equipment (oven and stove) came to \$21K. We would get a utility rebate and PACE 80% grant which reduces this price to \$4,200 out of pocket for BLC. Installation and removal of old equipment is included in this price.
  - Kitchen floors also need to be redone before the equipment is installed and would be an additional expense to BLC. The plan is to remove linoleum, sand, and epoxy the floor.
  - Mark mentioned we may also need to replace the hood which is having problems. This would not be included in this project. It would fall under the Fire Suppression Systems not kitchen equipment. Glenn will investigate.
  - Discussion was held regarding whether we can afford to replace the kitchen equipment in 2025 or should we wait until 2026? See the Resolution section below for final decision.
- Fundraiser for the General Fund – Cindy
  - Cindy proposed a Calendar Fundraiser. This would be "A Year in the Life of BLC" campaign, a 365-day year. See Resolution Section for details.
- We also need a fundraiser for Capital Improvement – Brian
  - We are going to hold off on this fundraiser until we see how the Calendar Fundraiser goes.
  - Cathy mentioned we should give members an opportunity to contribute to Capital Improve projects like the Kitchen Improvement Project, etc.
    - It was decided to make an announcement, during service, after the Council Meets each month reviewing the highlights of the Council Meeting. At that time Brian could mention that if anyone in the Congregation wants to donate to specific projects mentioned (like the Kitchen Project) they can do this.
- Key Requests
  - The Executive Council will approve key requests from anyone asking for access to the building before we bring up the new building access system. Pr. Katie or Gary can approve ongoing requests after that time.
- Request for funds for Ladies Tea on May 3rd - See Resolution Section for details.



# Council Meeting

## DISCUSSION:

- Update on Ray – He hurt his arm and starts physical therapy on 3/12. He is unable to play piano but is selecting music and helping to find substitutes. We have some substitutes that can help. The Executive Council will monitor this week by week as Ray continues to recover and watch the budget.
- Red Cards reception - Cathy
  - Council suggested an announcement be placed in the bulletin one more week.
- Advocacy Handouts – Cathy
  - Some people have requested copies of the handouts from the Advocacy Forum. We will put them up on the Advocacy Bulletin Board. It is OK to make an announcement of additions to bulletin boards.

## RESOLUTIONS:

- Greg Schumann moved that we go forward with the purchase of the kitchen equipment (oven and stove). Cathy Goodman seconded. This resolution passed unanimously.
  - Discussion: Greg said we have about \$4,500 that could be used for this. Glenn mentioned it would likely happen in late summer or early fall 2025.
- Fundraiser for Bethlehem Lutheran:
  - Cindy moved that BLC conduct a Calendar Fundraiser, Cathy Goodman seconded. Motion carried unanimously.
    - Cindy amended the motion to “BLC to conduct this Calendar Fundraiser beginning May1st”. Sabrina seconded the amended motion. The motion passed unanimously.
- Ladies’ Tea in May
  - The organizers of the tea (benefitting teen suicide prevention) are requesting \$250 from the Women’s Retreat Fund in the Faith Formation budget. Since this is not a retreat, Greg moved that \$250 for the Tea be taken out of our Thrivent Choice dollars. Sabrina seconded. Motion passed unanimously.
- One Service – Summer 2025
  - Sabrina moved BLC to hold one Sunday service (9:15am) from Memorial Day to Labor Day. No discussion was needed. Jaime seconded. The motion carried unanimously.

## CONTINUING OPEN ITEMS:

- Employee Handbook – P. Katie / Mark / Greg

## PRAYER CONSIDERATIONS & LORDS PRAYER

- Brian Carlson led the Council in the Lord’s Prayer
- Keep these members in our prayers; Matt James, Phyllis Wright, the Postle family, and Sue Smith.

**ADJOURNMENT:** Brian adjourned the meeting at 8:50 pm.

**UPCOMING DATES:** The next Council meeting will be Tuesday, April 8<sup>th</sup>, 6:30 Executive Session and Council Meeting at 7:00pm.





**LONGMONT**

**THE CULTIVA YOUTH PROJECT IS HIRING!**  
**¡EL PROYECTO JUVENIL CULTIVA ESTÁ CONTRATANDO!**

Get paid to work outside on our farm while improving your leadership skills!

Recibe dinero por trabajar al aire libre en Growing Gardens mientras mejoran tus habilidades de liderazgo!

LOCATED AT GROWING GARDENS FOOD PROJECT FARM / UBICADO EN GROWING GARDENS - PROYECTO ALIMENTACIÓN, 1000 15TH AVE, LONGMONT (BEHIND/DETRÁS DEL BETHLEHEM LUTERHAN CHURCH)

APPLICATIONS DUE / LA APLICACIÓN VENCE 4/23/25



**Easter Eggstravaganza**

**Saturday, April 19**  
**10:00 A.M.**

We invite all to this free event!  
 Easter Storytelling \* Egg Hunt \* Crafts \* Food



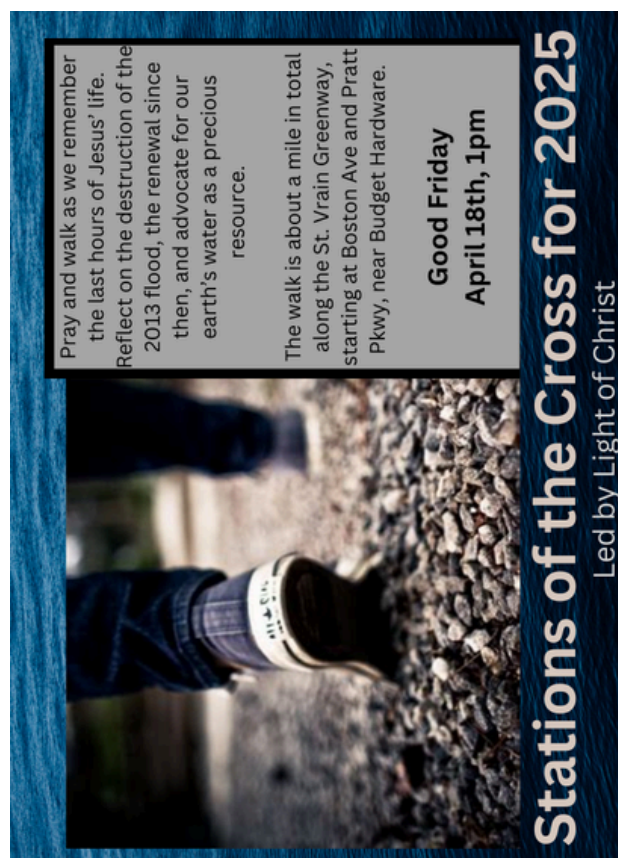
**He is Risen**

**CELEBRATE THE EASTER SEASON  
 AT BETHLEHEM LUTHERAN CHURCH**

**EASTER SERVICES**  
**Sunday, April 20**  
**8:00 a.m.**  
**10:15 a.m.**

**HOLY WEEK SERVICES**  
**Palm Sunday** April 13 at 8:00 a.m. & 10:15 a.m.  
**Maundy Thursday** April 17 at 7:00 p.m.  
**Good Friday** April 18 at 7:00 p.m.

**EASTER EGGSTRAVAGANZA (EGG HUNT)**  
**Saturday, April 19 at 10:00 a.m.**



Pray and walk as we remember the last hours of Jesus' life. Reflect on the destruction of the 2013 flood, the renewal since then, and advocate for our earth's water as a precious resource.

The walk is about a mile in total along the St. Vrain Greenway, starting at Boston Ave and Pratt Pkwy, near Budget Hardware.

**Good Friday**  
**April 18th, 1pm**

**Stations of the Cross for 2025**  
 Led by Light of Christ

Bethlehem Lutheran Church  
1000 15th Avenue  
Longmont, CO 80501

Return service requested

**Worship Services**

Sundays  
8:00 a.m. & 10:15 a.m.

**Office Hours**

Monday – Friday  
9:00 a.m. – 1:00 p.m.

**Bethlehem Staff**

**Pastor Katie Chullino** - [pastor@bethlehem-lutheran.net](mailto:pastor@bethlehem-lutheran.net)  
**Nancy Tiff**, Hospitality Coordinator - [nancy@bethlehem-lutheran.net](mailto:nancy@bethlehem-lutheran.net)  
**Gary Knutson**, Faith Formation Director - [faithformation@bethlehem-lutheran.net](mailto:faithformation@bethlehem-lutheran.net)  
**Karen Haag**, Bookkeeper - [bookkeeper@bethlehem-lutheran.net](mailto:bookkeeper@bethlehem-lutheran.net)  
**Tiffany Beisner**, Office Administrator - [admin@bethlehem-lutheran.net](mailto:admin@bethlehem-lutheran.net)  
**Aaron Jurkovich**, Webmaster - [webmaster@bethlehem-lutheran.net](mailto:webmaster@bethlehem-lutheran.net)  
**Amanda Bueschen**, Director of Cornerstone Preschool -  
[cornerstone\\_director@bethlehem-lutheran.net](mailto:cornerstone_director@bethlehem-lutheran.net)